



WASTE MANAGEMENT PROGRAMS

2021-2022



KEEP WEMINDJI BEAUTIFUL



Washiya Wemindji!

Protecting our land and our people is part of who we are. The waste generated by our community is a burden, expensive and destructive to our environment. Earlier this year, we adopted a new strategic plan for waste management.

We updated our waste management guideline with these new practices and have provided detailed instructions as to how we can all implement them at home. This will not only ensure the protection of our land, but also help Wemindji on its path to becoming Canada's 1st Zero Waste First Nation.

Some of these new practices include the launching of a new waste management webpage, detailing all of the information you need to know about our waste diversion programs. We will be launching this new webpage this April! Our first step is expanding our recycling program to include all public indoor and outdoor areas. We are also actively working on the roll-out of a new Composting program by summer 2022.

We are happy and excited to present you with this new guideline and we thank you for your ongoing efforts to manage our waste!

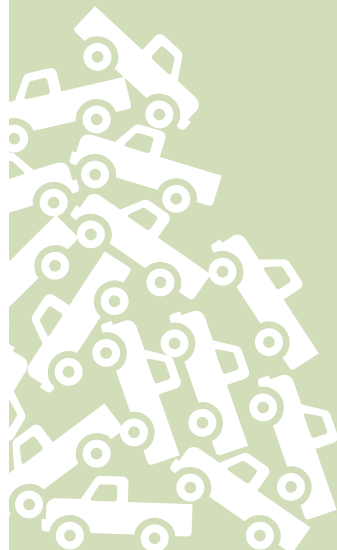
Happy reading!

Johnny Mark



In 2021, Wemindji produced about **812 tons of waste.**

The equivalent volume of **112 pick-up trucks.**



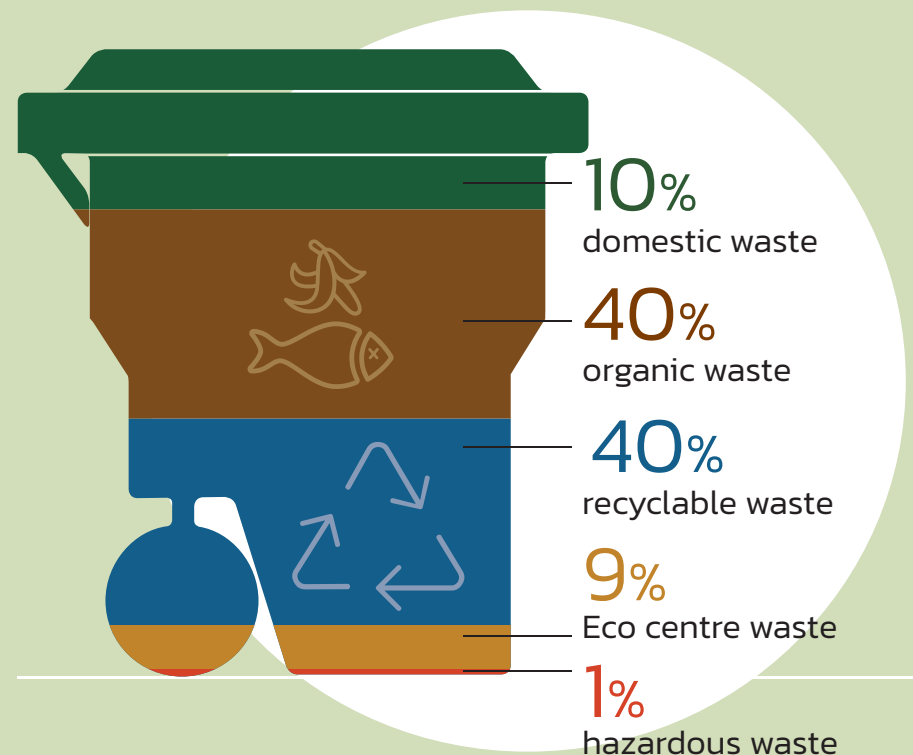
Waste generation increases as population grows. It has been estimated that **Wemindji will produce 2771 cubic metres of waste in 2021.**

At least twice this amount will be produced by 2050 if we don't make a significant change to the way we manage our waste at home.



HERE'S WHAT'S INSIDE YOUR TRASH.

Only 10% is really garbage (domestic waste)!




Did you know that when you are using one of the community's waste diversion programs Recycling (BLUE bin), Eco Centre and the Hazardous Waste disposal site, you are sending your waste **Outside** Wemindji to be processed.

Check out below Wemindji's **waste composition and programs** developed to divert waste as much as possible!



40%
Recycling

- Paper/ Cardboard
- Aluminum
- Glass
- Plastics 1, 2, 3, 4, 5, 7



UPCOMING PROGRAM

40%
Compost/Organics

- Veggies
- Meat and bones
- Plants
- Cardboard
- Wood



10%
Domestic Waste

- Diapers
- Litter
- Plastics



THIS IS HOW TO MANAGE YOUR WASTE.

DROP OFF AT ECO CENTRE

1%
Hazardous Waste

- Oil
- Paint
- Electronics
- Batteries



9%
Eco Centre (bulkies)

- Construction waste: Insulation, Shingles, etc.
- Tires
- Treated wood, etc
- Broken furniture



UPCOMING PROGRAM

Recovery/ Reuse

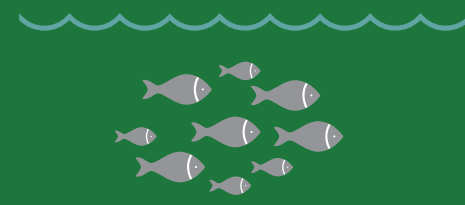
- Electronics
- Appliances
- Toys
- Art



Much of the trash that ends up in landfills can also be recycled or reused in other ways. Reducing the amount of waste produced is beneficial for a number of reasons:

- Reduces the need for new landfill space
- Saves valuable natural resources
- Keeps the community undisturbed from development
- Cuts down on greenhouse gas production
- Saves the community money by reducing disposal costs

Each of us play an important role in reducing the amount of waste that is produced in the first place and successfully divert it into other waste management streams, we can extend the lifespan of our landfill and do our part to ensure that our environment remains beautiful and pristine.



RECYCLING

Wemindji's recycling program recovery rate is currently less than 20%. According to a 2017 study and other standards, **a reasonable rate of recovery should be closer to 60%.**

We need to improve our household sorting to ensure that all recyclable materials end up in the blue bin!



40% of your waste is recyclable.

Follow the 3 simple rules to improve Wemindji's recycling recovery rate!

Rule 1

When purchasing new products, look for the recycling symbol to be sure the packaging can be recycled.

They are:

• Plastic containers featuring one of these symbols:

1, 2, 3, 4, 5, 7 (6 goes to garbage)

- Plastic bags (soft and stretchy)
- Plastic bottles, plates and cups
- Plastic food containers and cutlery (black plastic is garbage)



• Metals

- Tin, aluminum and steel cans, pie plates, trays, and roasting pans (cleaned)

• Glass

- Food containers or jars.

• Paper and Cardboard

- Paper bags, newspaper, flyers, cereal/snack cardboard boxes, printed paper glossy or not.



Rule 2

Rince containers before putting them in the Blue bin, to ensure it is clean enough to be processed by the recyclers.

Rule 3

Don't miss your recycling weekly collection and bring your BLUE bin at your curb side the day before the collect.



COMPOSTING

As we are targeting to become Canada's 1st Zero Waste First Nation, **our landfill is currently composed of 40% of organic waste that could be diverted to a composting platform** and become organic material to close gravel pits and help our forest to growth. The Cree Nation of Wemindji is thus currently working on the development of a new composting collection program to be launched in summer 2022!



UPCOMING PROGRAM
SPRING 2022



40% of your waste is compostable.

The future curbside collection will welcome:

Food Waste

- Table scraps
- Hunted animal carcasses
- Fished seafood and fishes
- Meat and poultry (including bones)
- Fruits and vegetables
- Bread, pasta, and cereal products
- Eggs and eggshells
- Coffee grinds, filters, and tea bags
- Cheese
- Pet food

Yard Waste

- Small branches
- Indoor and outdoor plants
- Leaves and grass trimmings

Other

- Non plastic packaging
- Parchment, napkins, and paper towel
- Newspaper and soiled paper
- Paper plates
- Cardboard boxes
- Pet litter



Keep an eye on our website or on Facebook to look for updates on the COMPOSTING program!

ECO CENTRE



The Eco Centre offers public disposal for wood, construction and demolition waste, hazardous waste, metals, bulky non-metallic and household recycling and waste.

The Eco Centre is open to the public for drop offs 24 hours a day, 7 days a week.

Please look for the signs at the site access to identify properly your waste category and avoid contamination.

Residents are encouraged to drop these goods off at the Eco Centre instead of including them in their curbside bin. However, the community will continue to offer curbside collection of bulky wastes every Wednesday.



There are **eleven (11) categories** of bulky waste collected at the ECO CENTRE, with bins for each type.



HAZARDOUS WASTE PLATFORM

DROP OFF AT ECO CENTRE



Hazardous waste is dangerous for human and environmental health.

- Household cleaners
- Car maintenance products
- Electronic devices
- Batteries
- Antifreeze
- Brake fluid
- Chlorine bleach
- Drain cleaners
- Fire extinguishers
- Propane tanks
- Paint
- Other chemicals and combustibles

Identify your household hazardous waste (HHW) at home and look for feature flammable, toxic, corrosive, or reactive on each of your cleaning or maintenance products. **Dispose them safely at the Eco center by dialing 819.978.3050 or 819.978.7509.**

UPCOMING PROGRAM

RECOVERY CENTRE



Our community is currently assessing the development of a Recovery Center facility to be used for:

Recovery and repair of reusable goods and materials for sale:

- Electronics
digital devices, TV's printers, light fixtures. etc.
- Appliances
large and small appliances, devices
- Housewares
furniture, toys, objects, tools, auto-parts, clothing and textiles
- Construction materials
treated wood, pallets, metal parts, tools, drywall, insulation, shingles, brick

Preparation for transport of exportable materials for recycling or safe disposal:

- Hazardous waste safe storage for exportation (batteries, chemicals, paint, ink, petroleum products, etc.)
- Domestic plastics 1, 2, 5 for bailing and export
- Domestic metals (aluminum and steel) for bailing and export. Domestic paper and cardboard.

Preparation of materials for local transformation and reuse:

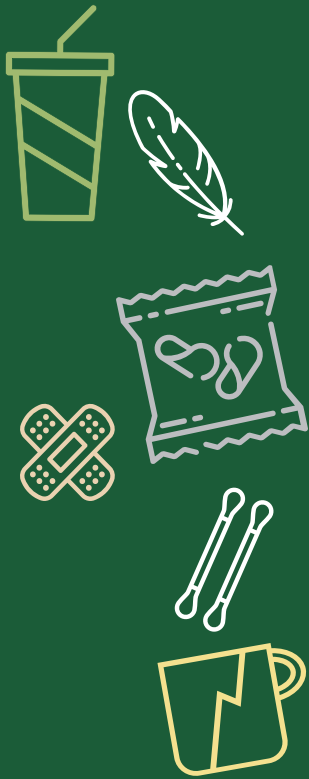
- Domestic glass jars, bottles and pyrex glass for crushing.

The new Facility could save thousands of dollars in shipping, create local job opportunity and reduce the amount of waste locally buried every year!

THE GOLDEN RULE: Always consider reusing it before disposing it.

DOMESTIC WASTE

Domestic waste (garbage) is only 10% of your total waste generation at home. Thus, only the following items should be put in your green bin.



Controlling your waste at the source is the best way to manage it!

- Liner bags (cereal, cookies, crackers)
- Black plastic food containers, cutlery and lids
- Foam polystyrene meat trays (liners are garbage)
- Cold drink cups and straws (recycle lids)
- Plastic bubble wrap
- Plastic food wrap (stretchy)
- Laminated plastic film (stand-up pouches, snack food bags)
- Dryer and disposable mop sheets, baby wipes, make-up pads, cotton tipped swabs, and dental floss
- Plastic or foil wrappers and aluminum foil
- Drink pouches and straws
- Hair, pet hair, feathers, nail clippings, dryer lint, candles and wax, cigarette butts and ashes
- Gum packages and blister packs
- Metallic gift wrap and bows
- Ribbons
- Broken mugs and dishes
- Aluminum foil wrap
- diapers
- animal litter



RECYCLING AND DOMESTIC WASTE CURBSIDE COLLECTION ROUTE AND SCHEDULE



	MONDAY	TUESDAY	WEDNESDAY	THURSDAY	FRIDAY
See map	Section 1	Section 2	Section 2 Section 1	Section 1	Section 2
AM					
PM					

Look for packaging feature while shopping. is NOT recyclables.

Due to weather, the collect day might be canceled. Look for updates on Facebook!

CONTACT

Band Office
819.978.0264



Director of Environment
819.978.0264 Ext 2250

Eco Centre Assistance
819.978.3050 or 819.978.7509

Hazardous Waste Platform appointment
819.978.3050 or 819.978.7509

Bulky Waste pick-up (regular collect every Wednesday)
819.978.3050 or 819.978.7509

Fire Department/Public Safety
819.978.3773

Visit our website at
wmwemindji.ca

You can also visit our Facebook page at
www.facebook.com/cnwcommunications

KEEP WEMINDJI BEAUTIFUL

